

S6301-56STP

L2/L3 PoE Switch

The UfiSpace S6301-56STP is a high-performance L2/L3 PoE switch designed to meet the growing demands of enterprise and campus access connectivity, with full Power over Ethernet (PoE) support.

Featuring 48 x 1G RJ-45 ports and 8 x 10G SFP+ ports, the S6301-56STP utilizes Broadcom's Trident3-X2 silicon, delivering a switching capacity of 130 Gbps. It fully supports IEEE 802.3af/802.3at on all 48 RJ-45 ports, providing up to 30W of power on each port, ensuring seamless integration of powered devices and robust management capabilities.

Powered by an Intel Denverton 4-core processor, the S6301-56STP simplifies and enhances enterprise and campus networks with flexibility and performance. It also includes redundant, hot-swappable components, offering increased reliability, availability, and reduced maintenance costs.



KEY BENEFITS

- Enable seamless deployment with powered devices in enterprise and campus network
- A broad range of Layer 2 and Layer 3 intelligent-enterprise switching features
- Top connectivity for small, medium sized or branch-level offices.
- Dynamic power allocation on all ports
- Advanced quality of service (QoS) and resiliency

KEY FEATURES

- High density 48 x 1G + 8 x 10G service interfaces
- 130Gbps switching capacity
- Intel® Denverton Quad-Cores
- Broadcom Trident3-X2 Silicon
- 1 RU small form factor with 440mm depth
- Hot swappable power supplies with 1+1 redundancy support
- Compliant with IEEE 802.3af/802.3at
- Hot swappable fan modules with 1+1 redundancy support

SPECIFICATIONS

PHYSICAL

- 8 x 1G/10G SFP+ ports
- 48 x 10M/100M/1G RJ45 port with PoE IEEE 802.3af/802.3at
- 1 x 100/1000M RJ45 management port
- 1 x RJ45 serial console port
- 1 x USB 2.0 Type-A port

Processor Intel Denverton 4-Core @ 1.6GHz

Memory 16GB DDR4

Storage 32GB SSD

ASIC Broadcom Trident3-X2 BCM56277

LED Power and System status LEDs per unit
Link and Activity LEDs per port
PoE Status LED per unit
FAN Status LED per FAN
PSU Status LED per PSU

Chassis 1RU, 440 x 440 x 43.8 mm or
(WxDxH) 17.32" x 17.32" x 1.72"
Weight: 5.74kg or 12.65lbs

Redundancy Hot swappable, 1+1 redundant PSU
Hot swappable, 1+1 redundant Fans

ENVIRONMENTAL

Power Specs. AC input: 100 to 240V, 12A
Typical power: 80 Watts (no transceiver)

Max. Operating Specs. Operating temperature: 0°C to 45°C (32°F to 113°F)
Operating humidity: 5% to 95% (RH), non-condensing

Max. Non-Operating Specs. Storage temperature: -40°C to 70°C (-40°F to 158°F)
Storage humidity: 5% to 95% (RH), non-condensing

PERFORMANCE

Switching Capacity 130 Gbps

Packet Buffer 4 MB

REGULATORY COMPLIANCE

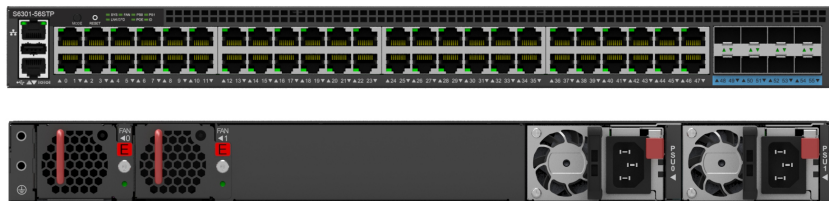
Safety	UL 62368-1 IEC 62368-1 BSMI	EMC	FCC Part 15, Subpart B, Class A ICES-003, Class A EN 55032, Class A EN 300 386 EN 55035
Environment	WEEE		

Specifications are subject to change without notice.
Contact our sales team for current configuration options.

S6301-56STP

Cloud &
Data Center
Solutions

S6301-56STP Front and Back Views



ACCESSORIES

Compatible Transceivers Types
10G SFP+ SR, 10G SFP+ LR, 10G SFP+ ER, 10G SFP+ ZR

Available to Order
Power Supply Types
PSU-921-AECR1, 920W AC, exhaust air flow

Fan Types
FAN-402825-HDN, exhaust air

