

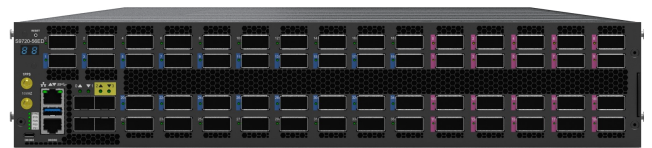
# S9720-56ED

## 800G DISAGGREGATED CORE AND EDGE ROUTER

The UfiSpace S9720-56ED is a 18 x 800G disaggregated open router that evolves the network to a 800G network, which enables next generation of 5G services and applications. The S9720-56ED can be deployed as a standalone device or within a core switching cluster as a "line card" element within the distributed disaggregated chassis.

As a standalone router, the S9720-56ED can be deployed at the edge network to enable transport services over a scalable next generation Telecom network. It is also suitable for central office data centers and general network aggregation. When coupled with UfiSpace's fabric switch, the S9720-56ED becomes a building block for the distributed disaggregated chassis (DDC). The DDC allows network service providers to implement a pay-as-you-grow model when scaling core network capacities with a S9720-56ED cluster scaling up to 921.6Tbps.

The S9720-56ED disaggregated core router uses the Broadcom J3 chipset, which provides 16GB deep buffering and 14.4Tbps switching capacity. It includes a knowledge-based processor (or TCAM) to perform up to 16 parallel searches to reach decision speeds of multiple billion decisions per second, which makes it ideal for provider edge applications. As a core router, the S9720-56ED enables fault and performance monitoring, non-stop routing support for control and data plane, and comprehensive high-availability networks.



## KEY BENEFITS

- Accelerated table lookup, packet buffering, and control memory with low latency high bandwidth memory
- Flexible and programmable packets processor
- Individual BMC for monitoring and managing health status
- High density ports with low power consumption
- Transparent networking, interoperability with S9705-48D, S9700-53DX, S9700-23D, S9710-76D and S9710-82DC
- Upstream connectivity management supported by flexibly configured fabric pipes
- Dynamic distribution and routing through automatic fault detection and recovery

## KEY FEATURES

- Dense, high capacity 400/800G service ports
- Fabric ports allow for horizontal scaling of network capacity
- Pay as you grow model for capacity increase
- 16GB deep buffering and Intel Icelake-D 8-Core @ 2.1GHz
- Hardware supports full SyncE and IEEE1588v2 (T-TC, T-BC/OC)
- Hot swappable power supplies with 1+1 redundancy support
- Hot swappable fan modules with 3+1 redundancy support

# SPECIFICATIONS

## PHYSICAL

- ◆ 18 x 100/400/800G or 36 x 100/400G QSFP-DD service ports supporting 400ZR and OpenZR+
- ◆ 20 x 800G QSFP-DD fabric ports
- ◆ 1 x RJ45 & Micro USB serial console ports
- ◆ 2 x 10G SFP+ & 2 x 25G SFP28 management ports
- ◆ 1 x 100/1000M RJ45 management port
- ◆ 1 x USB 3.0 Type-A port

Processor Intel Icelake-D 8-Core @ 2.1GHz

Memory 2x 32G DDR4 R-DIMM

Storage 2x 128G M.2 SSD

ASIC Broadcom Jericho3 BCM88860

BMC AST2620

Timing Interfaces 1 x 10MHz input/output SMB  
1 x 1PPS input/output SMB

Timing Support Stratum 3E OCOXO  
ITU-T Synchronous Ethernet (SyncE)  
IEEE 1588v2 (Default Profile,  
G.8265.1 G8275.1, G.8275.2 profiles)  
T-TC, T-BC/OC

Chassis (WxDxH) 2 RU, 436 x 762 x 87.7 mm  
or 17.17" x 30" x 3.45"  
Weight: 33 kg (72.75 lbs)

Redundancy Hot-swappable, 1+1 Redundant PSU  
Hot-swappable, 3+1 Redundant fans

## ENVIRONMENTAL

Power Specs. AC input: 200 to 240V  
DC input: -40 to -72V  
Typical power: 920.6 Watts (no transceiver)

Max. Operating Specs. Operating temperature: 0°C to 45°C (32°F to 113°F)  
Operating humidity: 5% to 85% (RH), non-condensing

Max. Non-Operating Specs. Storage temperature: -40°C to 70°C (-40°F to 158°F)  
Storage humidity: 5% to 93% (RH), non-condensing

## PERFORMANCE

Switching Capacity 14.4Tbps

Deep Buffer 16GB

## REGULATORY COMPLIANCE

Safety UL 62368-1 IEC 62368-1 EMC FCC Part 15B, Subpart B, Class A

Environment WEEE

Specifications are subject to change without notice.

# S9720-56ED

Telecom  
Networking  
Solutions

S9720-56ED Front and Rear Views



## ACCESSORIES

### Compatible Transceiver Types

800GE QSFP-DD OpenZR+, 800GE QSFP-DD ZR, 800GE QSFP-DD 2xLR4, 800GE QSFP-DD 2xFR4, 800GE QSFP-DD DR8+, 800GE QSFP-DD DR8, 800GE QSFP-DD SR8, 400GE QSFP-DD OpenZR+, 400GE QSFP-DD ZR, 400GE QSFP-DD ER4, 400GE QSFP-DD LR4, 400GE QSFP-DD FR4, 400GE QSFP-DD SR8, 400GE QSFP-DD DR4, 400GE QSFP-DD DR4+, 400GE QSFP-DD PLR4, 200GE QSFP56 SR4, 200GE QSFP56 FR4, 100GE QSFP28 ZR4, 100GE QSFP28 ER4, 100GE QSFP28 SR4, 100GE QSFP28 LR4

### Compatible Fabric Cable Types

800GE QSFP-DD AEC (Active Electrical Cable), 800GE QSFP-DD DAC (Direct Attach Cable), 800GE QSFP-DD ACC (Active Copper Cable), 800GE QSFP-DD AOC (Active Optical Cable)

### Compatible Timing Cable Types

SMB coaxial cable with 10-32UNF-2A connector for 1PPS and 10MHz

### Available to Order

#### Power Supply Types

PSU-302-DESR, 3000W DC, exhaust air flow  
PSU-302-AESR, 3000W AC, exhaust air flow

#### Fan Types

FAN-808012-HCE, exhaust air flow

